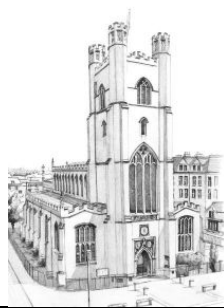


Great St Mary's eMag

1-15 May 2024: Issue 152



From the Assistant Curate

In contrast with many other languages, English doesn't distinguish between the singular and plural when speaking in the second person, so "you" can be singular or plural. Whenever we hear or read Jesus saying "you..." we can add an extra dimension to our thinking if we dig a bit deeper into whether Jesus is addressing his listeners as individuals or as a group.



English does have other ways of implying that an individual response is required. Our midweek Holy Communion gospel reading (John 12:44-end) showed us Jesus making an impassioned appeal to his listeners to decide for themselves whether they could believe that Jesus was sent by the Father with a message offering light instead of darkness and eternal life. We were indebted to Prof David Ford's excellent "*The Gospel of John – a theological commentary*" for the insight that Jesus' language, as confirmed by the original Greek, showed that this was an appeal not to the group but to individuals (through "whoever... anyone... the one who ...").

The same work highlights how by the use of the plural form of "you" in the original Greek in John 16:12-15 (part of our 8am Holy Communion gospel reading on Sunday) we are to know that the disciples will be guided *together* by the Holy Spirit into all truth, and that the Holy Spirit will reveal to them *together* the things that are to come and all that is of the Father and of the Son.

Likewise, when we come together, whether for services, for our bible study groups, or for the next sessions of the Living in Love and Faith course (11th May and 18th May), we can learn together about God and about faith in him through the work the Holy Spirit does in and with us together. That realisation that we are both individuals with our own personalities, circumstances and experience, but also come together as a church to learn and grow together, is something that is reflected in how as a church we are using ChurchSuite.

People will be able to use MyChurchSuite to set their own privacy settings to whatever feels comfortable for them as individuals (our default setting is that names and contact details are visible only to the clergy, staff, the PCC and to the volunteers who need them). But often we can be more effective if we are willing to share personal information with one another, for instance when we share our email address with the other people on the same

rota, so that we can do swaps with one another.



Whilst no system can be made 100% proof against fraud, using ChurchSuite for such practical matters is helping us to do our best to keep your personal information safe. If you have any concerns about this, or if you just want to check that we have your contact details so that we can contact you, do get in touch with me. And do please check your clutter/spam/junk folder to see if there's an email about ChurchSuite lurking there.

Revd Ceri Payne
Assistant Curate

Please note that the eMag is issued fortnightly. Please send any contributions for the next eMag at least two weeks prior to publication date to news@gsm.cam.ac.uk. You will continue to receive a weekly "What's on at Great St. Mary's"

Worship Schedule

Weekend worship - see Term Card for details

Sunday 5 May

- **8am** BCP Holy Communion
- **10am** Choral Eucharist and Children's Church
- **11.30am** Choral Mattins
- **5pm** Choral Evensong

Sunday 12 May

- **8am** BCP Holy Communion
- **10am** Choral Eucharist and Children's Church followed by APCM
- **5pm** Choral Evensong

Mid-week choral services

- Wednesday 1 May 5.15pm Choral Evensong
- Thursday 9 May - Ascension Day - **7.45am** Singing from the tower, **12.30pm** Eucharist, **5.15pm** Choral Evensong

Weekday Worship

- Monday—Friday 9am **Morning Prayer** in church and [Facebook](#) only (except Bank Holiday 6 May)
- Mondays 12.30 pm **Christian Meditation** in Michaelhouse (except Bank Holiday 6 May)
- Tuesdays 10.30am **The Ark**, a service of Holy Communion for children (in Michaelhouse) -
- Wednesdays 12.30pm **Holy Communion**
- Thursdays in Term 7.30pm **HeartsEase** (SCM student meeting) in Michaelhouse

Except for 8am, most services are also livestreamed and available on Facebook/YouTube

Watch previous services

To watch previous services please see our website www.greatstmarys.org/home

Sign up for our mailing list at greatstmarys.org/emag

News and Events

✦ Wed 1 May - First Wednesday Lunch

We are holding a lunch in the Michaelhouse Chancel on Wed 1 May, 1-2pm. It follows on from the 12.30 Holy Communion service in GSM but there is no obligation to attend that! It is a simple lunch of soup and bread, together with fruit and home-made cake/biscuits and we invite a contribution of £5. If you find standing in a crowd at coffee on a Sunday morning a bit tricky, this might be the place for you to come and sit and chat.

✦ Thu 2 May - Chat-Play-Sing

The toddler and baby group 'Chat-Play-Sing' meets every Thursday 10-12 in Michaelhouse. More information from dafyddrj@gsm.cam.ac.uk

✦ Thu 2 May - Read, Mark, Learn

Read Mark Learn continues virtually on Thursdays 5 to 6 pm to study the New Testament reading for the following Sunday's Sung Eucharist. During Eastertide we shall look at some of the key episodes in the growth of the early church in Acts, before moving on to Paul's letter to the Romans and his second letter to the Corinthians, which contain some of his most important and personal theological reflections. For more information, contact David Grumett davidg@gsm.cam.ac.uk.

The Zoom link is [here](#).

Meeting ID: 840 5256 2470

Passcode: 876406

✦ Fri 3 May - Lunchtime Concert 1pm-2pm

Great St Mary's Lunchtime Concert series presents:



The Jonathan Steffen Trio
Songs by Jonathan Steffen

Free entry



Sun 5 May - Occasional Choir

Do you enjoy singing church music but cannot currently commit to a weekly rehearsal and services? Then the Occasional Choir might be for you.

On 5 May we will be singing Choral Evensong at 5pm. Rehearsal 4pm.

Please contact Alex Berry, alex@gsms.cam.ac.uk, if you would like to know in advance what we shall be singing. If not, just turn up on the day with your best sightreading hat on!



Fri 10 May - Lunchtime Concert 1pm-2pm

Great St Mary's Lunchtime Concert series presents:

Stephen Perse Foundation

Free entry, with donations.



Sat 11 May - Women's Breakfast

Women's Breakfast 9.30am Breakfast at Michaelhouse (Montefiore Room) - food and fellowship. All are welcome - you can just turn up. Please contact office@gsms.cam.ac.uk for more information.



Sat 11 May - Living in Love and Faith 9.30-12.00



LIVING
IN LOVE
& FAITH

The course materials are very good, and people will benefit from attending just one session. Everyone is welcome.

Church of England 'Living in Love and Faith' Course:
5 sessions on Christian teaching and learning about Identity,
Sexuality, Relationships and Marriage

Website: [Living in Love and Faith \(churchofengland.org\)](http://Living in Love and Faith (churchofengland.org))

Earlier in the year, the PCC asked us to offer the opportunity to learn about the teaching and issues related to human identity, sexuality, relationships and marriage, which the Church of England has been discussing in General Synod in the last year. This resulted in the House of Bishops commending 'Prayers of Love and Faith' (PLF) for use in regular public worship or private prayer in December 2023.

We are offering 3 sessions on Saturdays (the first 2 meetings will cover two sessions of the LLF course materials):

20th April 9.30-12.00 11th May 9.30-12.00 18th May 9.30-11.00

They will be led by Revd Canon Jutta Brueck and Revd Alison Kennedy.

Please note the dates and register your interest or send any questions to clergy@gsms.cam.ac.uk



Sun 12 May - APCM 11.30am

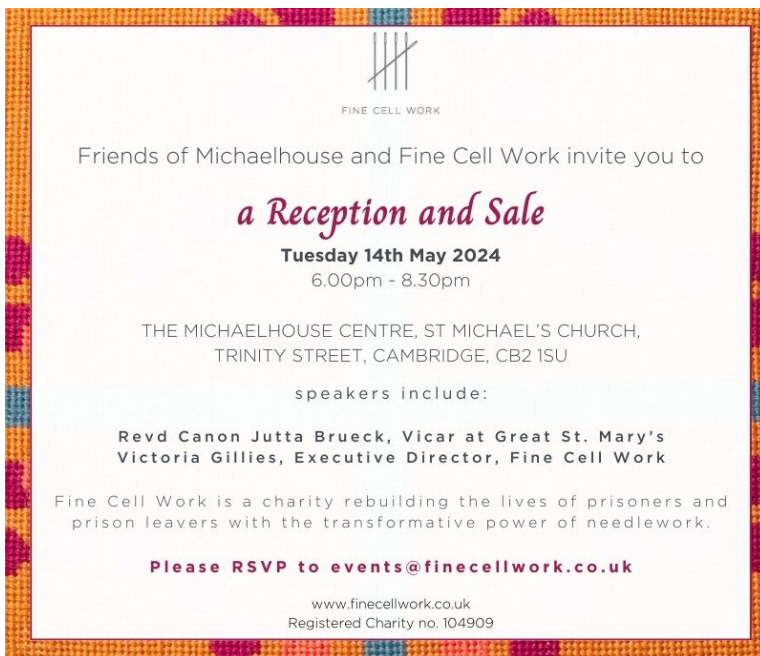
The Annual Parochial Church Meeting (APCM) is an important event in the life of Great St Mary's Church. It will be held in the Michaelhouse Chancel at 11.30 am.

The first part is called the 'Vestry Meeting' at which our Churchwardens are elected. Those eligible to vote are those on the Great St Mary's Electoral Roll and anyone who lives within our parish. The second part is the Annual Parochial Church Meeting, which will be the opportunity to receive the Financial Report for the accounts for 2023 and the Budget for 2024, and to elect members to the Parochial Church Council (PCC), who serve for three years. This year, we have six vacancies to fill. Any person being nominated for the role of PCC member must already be on the Electoral Roll (a copy of which has been displayed in Great St Mary's and at Michaelhouse).

We also produce an Annual Review of activities in 2023 for the APCM, and we will discuss plans for 2024. The calling notices will be published in the South Porch and in Michaelhouse. Nomination papers are available from the PCC Secretary, Marion Cobby, at pccsec@gsm.cam.ac.uk.



Tue 14 May - Reception & Sale 6.00-8.30pm



Friends of Michaelhouse and [Fine Cell Work](http://www.finecellwork.co.uk) are delighted to invite you to an evening Reception and Sale at Michaelhouse Café on **Tuesday 14th May 2023 at 6pm**. This is a wonderful opportunity for you to bring family and friends who might be interested in shopping for bespoke handmade products that have a meaningful social purpose. This is also a chance to learn more about Fine Cell Work's rehabilitative programmes and their impact.

Every time you purchase a Fine Cell Work [product](#) or [donate](#) to the charity, you support prisoners and ex-prisoners to discover the healing power of paid, purposeful, creative needlework. To learn more about [who they are](#) and [what they do](#), do have a look at their website. Come and enjoy the evening and support this charity, with items ranging from intricately designed cushions to giftware. We look forward to seeing you there. **Do rsvp to events@finecellwork.co.uk.**



Welcome Glen Dempsey



It is a great pleasure to be moving to Great St Mary's as Organist and Assistant Director of Music this September. Some of my formative musical experiences took place in the church, and I cannot wait to get stuck in. I was born in Bury St Edmunds, Suffolk, in 1994, and sang as a chorister in St Mary's Church in that town, and later in the choirs at St Edmundsbury Cathedral. It was a source of good fortune that Sam Hayes was Musician-in-Residence at King Edward VI School, where I attended upper school; he gave me the opportunity to give my first organ recital at Great St Mary's when I was in Year 10. For the Sixth Form I moved to the Purcell School for Young Musicians, but I continued to travel back to Cambridge fairly frequently to play for services at GSM.

Upon leaving school I took up the organ scholarship at St George's Chapel, Windsor Castle. Alongside playing for and directing services in Chapel, I gained a fair amount of teaching experience in the Choir School. A year in the Netherlands followed, where I studied at the conservatoire in Amsterdam and worked as Assistant Organist at the Catholic Basilica; that year was a nice opportunity for me to indulge my passion for languages! I returned to England to take up a place as Organ Scholar at St John's College, Cambridge, reading for a degree in Music; they were very intense and full-on years, when I was often spinning a seemingly impossible number of plates, but very good preparation for a career in music. Upon graduating I took on the roles of Assistant Director of Music at Ely Cathedral and Organist of King's Ely. I have had five enjoyable and fulfilling years working in our diocesan cathedral, and am now looking forward to the next step.

Outside of music, I am a keen and enthusiastic cook - though haven't quite gotten the hang of baking yet (any tips will be appreciated in due course!).

Pastoral Care

A message from Canon Jutta Brueck. If you would welcome the opportunity to have a confidential conversation please do not hesitate to email me on juttab@gsm.cam.ac.uk or leave a message with the parish office on 01223 747273. Members of the clergy team are always glad to visit members of the church family in their homes, to talk about their faith, to pray with them (especially when they are ill), to be a listening ear, and a comfort in sorrow. Email Shirley ssh49@gsm.cam.ac.uk

Pastoral Care Group

A Pastoral Care Group has been set up to help oversee our pastoral work at GSM. They will support the clergy and visit parishioners as requested. The group at present are: Ruth Bridgen, Gordon Campbell and Margaret Johnston and Andrew Watson. You can speak to them or the clergy directly, or email Shirley ssh49@gsm.cam.ac.uk . **In a pastoral emergency the phone number remains 01223 747277**



Malcolm Clarke



It is with much sadness that we record the passing of Malcolm Clarke on 5 April, 2024. Malcolm was a member of Great St Mary's for over 50 years. He was a great cycling enthusiast. In the early days, he used to bring his two sons to church in a buggy drawn by his bike. As they grew older, all three would come on a 3 'triplet' seater bike. In retirement Malcolm used to ride his tricycle 10 miles daily out of Cambridge according to the direction of the wind and always to a good café or garden centre for coffee! We well remember his involvement in the GSM cycle ride to Ely Cathedral to raise money for the West End development in 2012 when we all had lunch in the Bishop's garden! Malcolm was a regular member of the Men's Breakfast Group and latterly, particularly attended the 8am Holy Communion services, where the traditional devotion and language meant a lot to him. He took his faith seriously and amassed a significant collection of books on aspects of Christian spirituality. In the days when volunteers staffed the tower, Malcolm did many Saturday stints. He was born on 1st April but because it was after noon, he said he was not an April fool!

Malcolm had a distinguished academic career. He was a Professor of Law at Cambridge specialising in Commercial Contract law and a Fellow of St John's College. Malcolm was a keen photographer and regularly recorded personalities at Law Faculty events and personal occasions for over nearly 40 years. He donated an album of his photographs to the Faculty. These have been scanned and catalogued and are now included in the [Eminent Scholars Archive](#) as a visual record of Faculty members, guests and Goodhart Visiting Professors from the late 70s to the early 2000s.

Sixteen years ago Malcolm had a severe cycling accident. Seven years ago he had a stroke and was also diagnosed with Parkinson's and found mobility and communication increasingly difficult. Malcolm was devotedly cared for by his wife Eva. The funeral for Malcolm will be at Great St Mary's at 11.30am on Thursday 2 May. Our love and thoughts are with Malcolm's wife Eva, and their sons, Tim and Nick.

Year's Mind



Almighty and eternal God, from whose love in Christ we cannot be parted, either by death or life: hear our prayers and thanksgivings for all whom we remember this day; fulfil in them the purpose of your love; and bring us all, with them, to your eternal joy; through Jesus Christ our Lord. Amen.

Herbert Robinson	2 May
Philip Oswald	5 May
Graham Moffat	8 May
Dominick Spencer	8 May
Colin Rosenstiel	8 May
Brenda Hayward	31 May

Service



Christian Aid Week 2024



Although Christian Aid is allocated one particular week in May when it can conduct house-to-house collections, there is no reason why we cannot hold tea (or coffee) gatherings throughout May in order to raise funds for their commendable work. If you could consider inviting half a dozen friends and neighbours in, explaining that there will be donation envelopes for Christian Aid, I can provide you with the necessary materials. It does not have to be just for GSM members but might be a good opportunity to welcome others too. Do please contact me if you/your house group would like to hold an event - and also if you would like to be invited to attend one.

There will also be donation envelopes available in church.

lorna_atwell@hotmail.com



Eco tip - don't forget to complete the survey

How are we doing as a congregation to reduce our carbon footprint? The GSM Environment Group invites you to take part in a survey to assess our lifestyles. [You can complete the survey on this link](#). If you would rather complete the survey by hand, there will be paper copies available at the back of the church and at coffee time after the Sunday morning service. All responses are anonymous.

We will publish the results and offer ideas as to how we can all help to reduce carbon emissions to tackle the climate crisis.

Thank you.



Coming soon.....Come and Sing Evensong

COME AND SING: EVENSONG

HOWELLS ST PAUL'S SERVICE
LOQUEBANTUR VARIIS LINGUIS – TALLIS
LEIGHTON RESPONSES

FOR ADVANCED SINGERS. MISSING BEING A CHORAL
SCHOLAR? COME AND JOIN US TO SING THE SERVICE OF
EVENSONG ON SUNDAY 19 MAY!

14.00 - REHEARSAL

16.00 - TEA BREAK

17.00 - EVENSONG WITH REFRESHMENTS AFTERWARDS
OPTIONAL REHEARSAL ON SATURDAY 4 MAY: 14.00- 16.00



Great St Mary's
THE UNIVERSITY CHURCH CAMBRIDGE

SIGN UP NOW!



Great St Mary's is hosting a Come-and-Sing Choral Evensong for advanced choral singers on Whitsunday. The musical programme includes Herbert Howells' electrifying St Paul's Service, Thomas Tallis's *Loquebantur variis linguis*, and Kenneth Leighton's Responses. We would love to invite singers to join us for what promises to be an ambitious and fun afternoon of music-making. The choir will be conducted by Alexander Berry (Director of Music, Great St Mary's) and the organist will be Alex Trigg (Organ Scholar, St John's Voices). The schedule as follows:

1400 Rehearsal

1600 Tea Break

1700 Evensong

Music will be provided. For those who would like, an extra note-bashing rehearsal will be held on Saturday 5 May, from 1400 to 1600.

To sign up, fill in the following form: <https://forms.office.com/e/Aig3jesizh>. For more information, email music@gsm.cam.ac.uk



Coming soon.....



This year's Little Gidding Pilgrimage is on **Saturday 18 May**, and will be led by the Bishop of Norwich, the Rt Revd Graham Usher. You can find out more [information here](#). If anyone wants more information or wishes to share a lift, contact office@gsm.cam.ac.uk

All Things Bright and Beautiful - the GSM Gardening Club



Tuesday **21 May** 2 pm Guided tour of Murray Edwards College Gardens,

Tuesday **11 June** 10 am Guided visit to Homerton College Gardens

If you would like to go on either of the college garden tours, or help in any way at the open garden, (plants to sell and help on the day - greatly appreciated). Proceeds of the sale

will go towards the Choir Tour to Germany.

Please contact: Juliet Jackson: juliet@jmcj.org or David Bridges: db347@cam.ac.uk

(Photo: Kim Fyson / Murray Edwards College Fellows' Garden)

Open Garden

Saturday 15th June
2PM - 4PM
3 Adams Road, CB3 9AD
Entrance £5
Concessions £2, accompanied children u16 free

To include:
Tea and cake • Garden tours
Ask a gardening expert • Kids' activities
Live performances by choir members

For sale

Garden plants • Houseplants
Baked goods • Crafts

Donations of extra plants to sell gratefully received. Please drop off at 3 Adams Road anytime from Thursday 13th June or by arrangement: GSMplantsale@gmail.com

Great St Mary's
THE UNIVERSITY CHURCH CAMBRIDGE

All proceeds to
Great St Mary's Choir Summer Tour

Elsewhere.....

You are welcome to all or any of the series of talks on Inclusive Theology at St Paul's Church, Hills Road, Cambridge.



St Paul's

Inclusive Theology

...an opportunity to look at things differently

6pm, St Paul's Church

1 hour, including Q & A, followed by refreshments

28th April	Queer Theology <i>Rev'd Dr Charlie Bell</i>
12th May	Black Theology <i>Rev'd Dr Carlton Turner</i>
19th May	Trauma Theology <i>Dr Karen O'Donnell</i>
26th May	Disability Theology <i>Dr Rachel Holdforth</i>
2nd June	Feminist Theology <i>Hannah Fytche</i>

All are welcome!



To register: <https://forms.gle/eGo8ey2szoBVeuV36>,
use the QR code, contact us via:
inclusive.theology.series@gmail.com
...or just turn up!



May

Wednesday	1	12.30pm	Holy Communion in GSM
		1.00pm	First Wednesday Lunch in Michaelhouse
		5.15pm	Choral Evensong
Thursday	2	10.30am	Chat-Play-Sing in Michaelhouse
		7.30pm	Heartsease in Michaelhouse
Friday	3	1.00pm	Free lunchtime concert in GSM
Easter 6	5	8am	BCP Holy Communion;
		10am	Choral Eucharist and Children's Church
		11.30am	Choral Mattins;
		5pm	Choral Evensong
Monday	6		Bank Holiday - no Morning Prayer or Christian Meditation Church will open at 1pm.
Tuesday	7	10.30am	The Ark in Michaelhouse

Wednesday	8	12.30pm	Holy Communion in GSM
		6pm	University Confirmation Service
Ascension Day	9	7.45am	Singing from the tower followed by breakfast
		10.30am	Chat-Play-Sing in Michaelhouse
		12.30pm	Eucharist in GSM Chancel
		5.15pm	Choral Evensong
		7.30pm	Heartsease in Michaelhouse
Friday	10	1.00pm	Free lunchtime concert in GSM
Saturday	11	9.30am	Women's breakfast in Michaelhouse
		9.30am	Living in Love and Faith Course in Michaelhouse
Sunday After Ascension	12	8am	BCP Holy Communion;
		10am	Choral Eucharist and Children's Church followed by APCM;
		5pm	Choral Evensong
Monday	13	12.30pm	Christian Meditation in Michaelhouse, followed by soup lunch
Tuesday	14	10.30am	The Ark in Michaelhouse
Wednesday	15	12.30pm	Holy Communion in GSM
		5.15pm	Choral Evensong
Thursday	16	10.30am	Chat-Play-Sing in Michaelhouse
		7.30pm	Heartsease in Michaelhouse
Friday	17	1.00pm	Free lunchtime concert in GSM
Saturday	18	9.00am	Men's communion and breakfast in Michaelhouse
		9.30am	Living in Love and Faith Course in Michaelhouse
		1.00pm	Friends of Michaelhouse Lunchtime Concert
Pentecost Sunday	19	8am	BCP Holy Communion;
		10am	All Age Choral Eucharist;
		5pm	Come and Sing: Choral Evensong
Monday	20	12.30pm	Christian Meditation in Michaelhouse, followed by soup lunch
Tuesday	21	10.30am	The Ark in Michaelhouse
		2.00pm	Guided tour of the Murray Edwards College Gardens, followed by tea in the café.
Wednesday	22	12.30pm	Holy Communion in GSM
Thursday	23	10.30am	Chat-Play-Sing in Michaelhouse
		5.15pm	Choral Evensong
Friday	24	1.00pm	Free lunchtime concert in GSM
Trinity	26	8am	BCP Holy Communion;
		10am	Choral Eucharist (no Children's Church);
		11.30am	University Sermon (Ramsden): Rt Revd Dr Paul Swarup followed by reception in Michaelhouse;
		5pm	Choral Evensong
Monday	27		Bank Holiday - no Morning Prayer or Christian Meditation Church will open at 11am.
Tuesday	28	10.30am	<i>No Ark this week (half term)</i>
		7.00pm	Eric Liddell Service, followed by refreshments
Wednesday	29	12.30pm	Holy Communion in GSM
Thursday	30	10.30am	<i>No Chat-Play-Sing (half term)</i>
		7.30pm	Heartsease in Michaelhouse
Friday	31	1.00pm	Free lunchtime concert in GSM